

Transparency
and Natural Light



Outdoor use

Roller screens, skylight shades, pergolas, shadesails, conservatory and skylight shades, drop-arm awnings



■ **Unmatched transparency**

Soltis Horizon 86 offers excellent outward visibility so the view can be enjoyed even when shades are closed. It effectively blocks up to 85% of the heat when installed on the outside of the building.

■ **Maximized natural light**

Soltis Horizon 86 provides more natural light, providing significant benefits:

- saves energy since less artificial light is required
- improves health, well-being and productivity in professional or private environments.

■ **Coordinated ranges**

All Soltis Horizon 86 colors coordinate with Soltis Perform 92 to:

- coordinate all facades of a building
- ensure ideal visual comfort of all facade orientations
- adjust thermal protection to maximize energy savings.

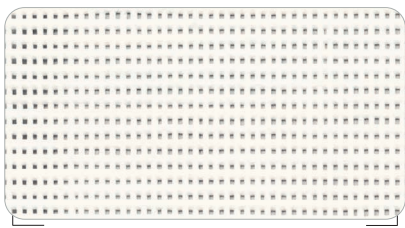
Almost invisible solar protection for better light control





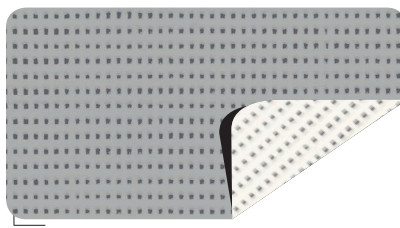
Bronze 177 cm — 267 cm

86-2043



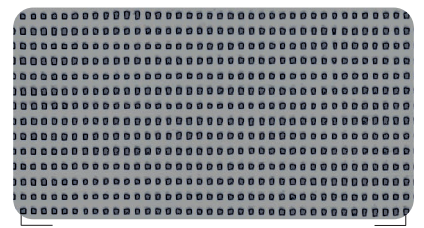
White 177 cm — 267 cm

86-2044



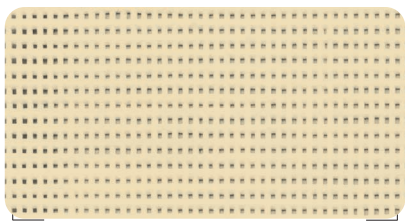
Alu/White 177 cm — 267 cm

86-2051



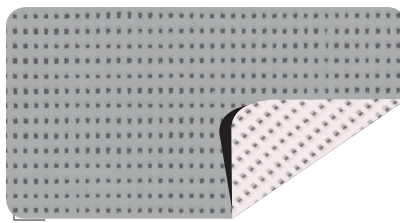
Beaten-metal 177 cm — 267 cm

86-2045



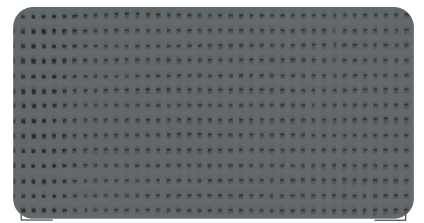
Champagne 177 cm — 267 cm

86-2175



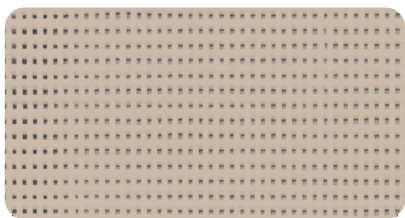
Alu/Oat 177 cm — 267 cm

86-2046



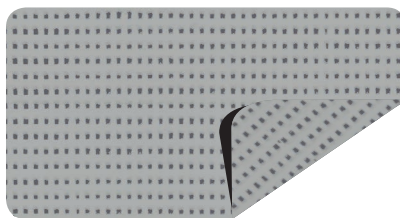
Concrete 177 cm — 267 cm

86-2167



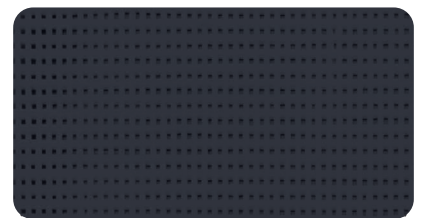
Sandy beige 177 cm — 267 cm

86-2135



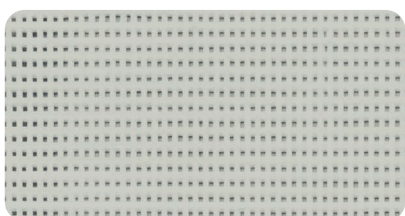
Alu/Alu 177 cm — 267 cm

86-2048



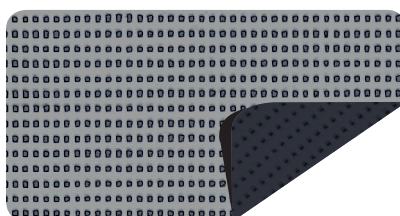
Anthracite 177 cm — 267 cm

86-2047



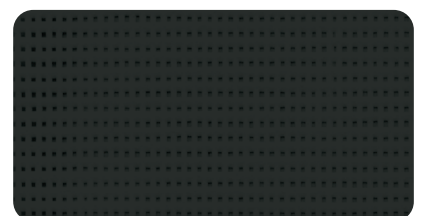
Boulder 177 cm — 267 cm

86-2171



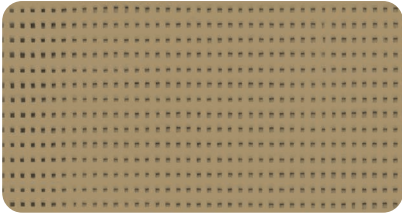
Alu/Anthracite 177 cm

86-2068



Black 177 cm — 267 cm

86-2053



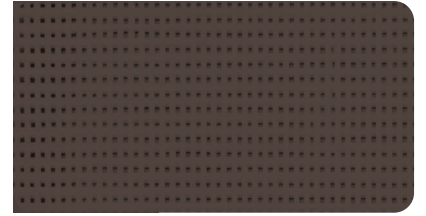
Pepper 177 cm — 267 cm

86-2012



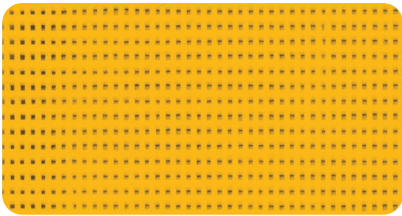
Cocoa 177 cm

86-2148



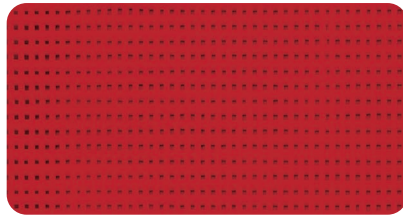
Bronze 177 cm — 267 cm

86-2043



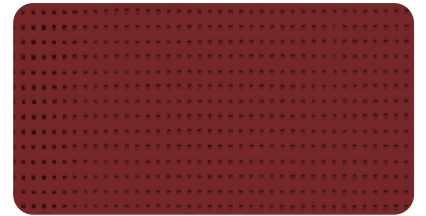
Buttercup 177 cm

86-2166



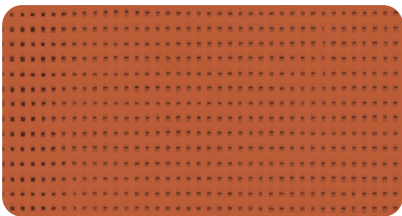
Red 177 cm

86-8255



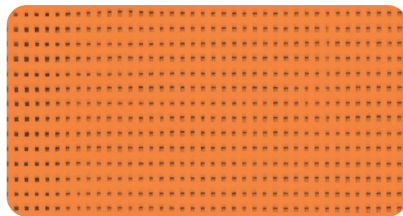
Muscat 177 cm

86-50260



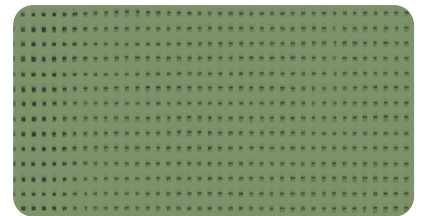
Caramel 177 cm

86-50261



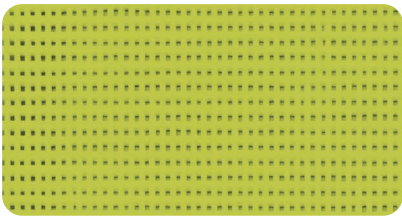
Orange 177 cm

86-8204



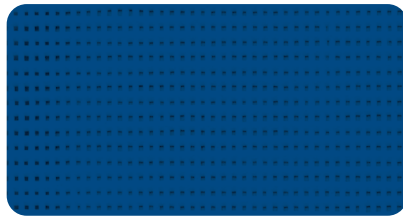
Moss green 177 cm

86-2158



Bamboo 177 cm

86-50333

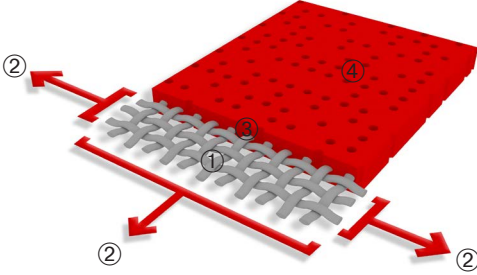


Midnight blue 177 cm

86-2161

■ Exclusive Précontraint® technology

Patented worldwide, the Précontraint® technology by Serge Ferrari involves keeping the composite under tension throughout the manufacturing cycle. It gives our materials exceptional performance that enable them to surpass market standards in terms of dimensional stability, mechanical strength, coating thickness and flatness.



High-tenacity polyester micro-yarn base cloth	①	Superior elongation and tear resistance
A coating with fabrics under bi-axial constant tension in both warp and weft directions	②	No deformation during processing and use
Greater coating at the top of the yarns and a dirt resistant surface treatment	③	Superior aesthetic and mechanical durability
Exceptional flatness and thinness	④	Smooth finish easy to clean, space saving, easy rolling

■ Solar and light properties (EN 14501)

	Width (cm)	TS	RS	AS	TV n-h	EN 13363-1* Type "C" glazing		EN13363-2** Type "D" glazing			
						177	267	g_{tot}^e	g_{tot}^i	g_{tot}^e	g_{tot}^i
						86-2012	• •	18	27	55	16
86-2043	• •	15	11	74	15	0.16	0.53	0.07	0.28		
86-2044	• •	29	59	12	28	0.20	0.38	0.11	0.15		
86-2045	• •	16	29	55	16	0.15	0.48	0.08	0.23		
86-2046 A	• •	22	40	38	21	0.18	0.44	0.10	0.16		
86-2046 B	• •	22	55	23	21	0.17	0.39	0.09	0.20		
86-2047	• •	17	7	76	17	0.18	0.55	0.07	0.28		
86-2048	• •	19	39	42	19	0.16	0.44	0.09	0.20		
86-2051 A	• •	22	40	38	20	0.18	0.44	0.09	0.20		
86-2051 B	• •	22	60	18	20	0.16	0.38	0.09	0.13		
86-2053	• •	14	5	81	14	0.16	0.55	0.07	0.29		
86-2068 A	• •	17	31	52	17	0.16	0.47	0.08	0.23		
86-2068 B	• •	17	7	76	17	0.18	0.55	0.09	0.28		
86-2135	• •	24	39	37	22	0.19	0.45	0.09	0.21		
86-2148	• •	17	13	70	17	0.17	0.53	0.07	0.27		
86-2158	• •	18	25	57	16	0.17	0.49	0.08	0.25		
86-2161	• •	22	20	58	17	0.20	0.51	0.08	0.28		
86-2166	• •	31	45	24	28	0.23	0.43	0.11	0.21		
86-2167	• •	17	14	69	17	0.17	0.53	0.07	0.26		
86-2171	• •	22	36	42	20	0.18	0.46	0.08	0.21		
86-2175	• •	30	57	13	28	0.21	0.39	0.11	0.16		
86-8204	• •	29	41	30	21	0.22	0.44	0.10	0.23		
86-8255	• •	21	24	55	14	0.19	0.49	0.07	0.27		
86-50260	• •	15	13	72	14	0.16	0.53	0.07	0.28		
86-50261	• •	20	27	53	15	0.18	0.48	0.07	0.25		
86-50333	• •	22	32	46	19	0.19	0.47	0.08	0.24		

A: Aluminium face exposed to the sun
B: Coloured face exposed to the sun
TS: Solar Transmission (%)
RS: Solar Reflection (%)
AS: Solar Absorption (%)
TS + RS + AS = 100% of incident energy
TV n-h: Normal-hemispherical visible light transmission (%)
g_{tot}^e : External solar factor
g_{tot}^i : Internal solar factor

*Simplified method EN 13363-1

The transmission and reflection values above are based on the integrated values of the glass combined with the screen. These are used to calculate the g_{tot} value. Type "C" glazing is double glazing and insulated with low emissivity in position 3 (4 + 16 + 4; Argon-filled) $g = 0.59 - U = 1.2$.

**Detailed method EN 13363-2

The transmission and reflection values above are based on the integrated values of the glass combined with the screen. These are used to calculate the g_{tot} value. Type "D" glazing is double glazing and insulated with low emissivity in position 2 (4 + 16 + 4; Argon-filled) $g = 0.32 - U = 1.1$.

Soltis

Horizon 86

	■ Technical properties	Standards
Openness factor	14%	
Weight	380 g/m ² — 11.2 oz/sqyd	EN ISO 2286-2
Thickness	0.45 mm — 450 microns	
Width	177 cm - 267 cm — 69.7 in. - 105.1 in.	
■ Length of rolls		
Standard format length in 177 cm	50 lm — 54.68 yds	
Standard format length in 267 cm	40 lm — 43.74 yds	
■ Physical properties		
Tensile strength (warp/weft)	230/160 daN/5 cm	EN ISO 1421
Tear strength (warp/weft)	45/20 daN	DIN 53.363
■ Flame retardancy		
Rating	B1 /DIN 4102-1 — BS 7837 — BS 5867 — Schwerbrennbar-Q1-Tr1 /ONORM A 3800-1 Classe 1 /UNI 9177-87 — M1 /UNE 23.727-90 — VKF 5.2 /SN 198898 — 1530.3/ AS /NZS G1 /GOST 30244-94 — Method 1 /NFPA 701 — CSFMT19 — Class A /ASTM E84	
Euroclass	B-s2,d0	EN 13501-1
■ Management systems		
For quality		ISO 9001

■ Certifications, labels, warranties, recycling



With **S+** Serge Ferrari goes further than the standards...
(consult us for further information)

■ Tools and services

- LCA and FDES (Health and Environmental Datasheet) available on request
- Personalised service for simulating your project's thermal performance and related Soltis solar protection systems: please contact your Serge Ferrari representative
- Tool for evaluating energy savings generated by Soltis solar protection systems: www.textinergie.org
- Document and photo libraries: www.sergeferrari.com

The technical data above are averaged values with a +/- 5% tolerance.

The buyer of our products is fully responsible for their application and their transformation with regard to any possible third party. The buyer of our products is responsible for their implementation and installation according to the standards, workmanship and safety regulations in force in destination countries. For information on our contractual warranty, please refer to the relevant terms and conditions.

The values quoted above represent results of tests performed in compliance with common design practices and are provided for information only to enable customers to make the best use of our products. Our products are subject to changes based on technical advances and we reserve the right to modify their characteristics at any time. The buyer of our products is responsible for checking the validity of the above data.

For metallic and interferential colours, a difference in shade may be observed in different roll widths for the same reference: small width (1770 mm) and large width (2670 mm). We advise strongly against combined assembly of these.

Soltis and Précontraint are Serge Ferrari registered trademarks.
Ref. 1046 • 12 - 2019/V1.01 • 250€

EN

Cover photo: Gymnasium, Meschede, Germany. © Philip Kistner
Inside photos: Antalya Exhibition, Botanic Park, Antalya, Turkey.
Arti Architecture project. © Yercelik Architectural Photography
Bank of California, Los Angeles, United States. © J. Miller Canvas Inc